



Bright Lights, Big City



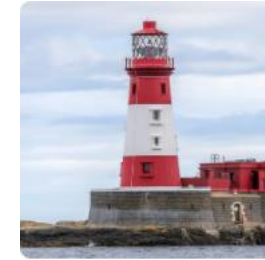
Muck, Mess and Mixtures



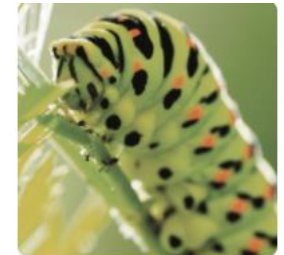
Towers, Tunnels and Turrets/Magnificent Monarchs



The Enchanted Woodland



Coastline



Wriggle and Crawl

Memorable experience	Building Tudor houses and starting the fire	Messy Mixtures afternoon	Trip to Skipton Castle	Trip to Calder Vale, bluebell walk	Trip to Pharos and Lower Lighthouse and promenade	Mini-beast hunt
Texts	Toby and the Great Fire of London (Literacy Shed) Pussycat, Pussycat, Where Have You Been?	Whiffy Wilson, The Wolf who Wouldn't Wash The Magic Porridge Pot	Selection of non-fiction books about castles.	Owl Babies Little Red Riding Hood After the Storm	The Lighthouse Keeper's Lunch Katie Morag and the New Pier	Superworm Aaaargghh Spider
English	Recount Fire description	Retell/Innovate Letter to persuade Instructions	Recount Non-chronological report	Letter writing Instructions	Character description Persuasion Explanation	Retell/Innovate Description
Science	Everyday materials; Working scientifically	Everyday materials; Working scientifically	Habitats; Everyday materials; Working scientifically	Plants and animals; Identifying and classifying	Habitats Materials	Habitats; Animals, including humans; Working scientifically
Art and Design		Painting - exploring colour and texture		Clay- creating Fairy doors - inspired by nature		Printing - inspired by nature
Design and technology	Mechanisms - Design and make a wheeled		Textiles- Design and make a flag/standard		Food Technology - Design and make a sandwich	



Bright Lights, Big City



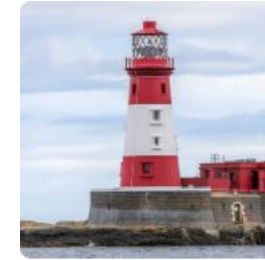
Muck, Mess and Mixtures



Towers, Tunnels and Turrets/Magnificent Monarchs



The Enchanted Woodland



Coastline



Wriggle and Crawl

vehicle to travel around London

History

The Great Fire of London
Samuel Pepys
Transport past and present
Change over time

Castles and castle life;
Significant individuals
Monarchy and
Monarchy timeline

Jobs in the past
Significant people -
Grace Darling

Geography

Countries and capital cities of the UK (London focus); Using locational language; Using maps; Geographical similarities

Castles around the world

Making maps

Maps, globes and atlases; World seas and oceans; Human and physical features; Locational language; Compass directions; Physical processes – erosion; Changes over time; Tourism

Fieldwork

Computing

Ebook Creation

Programming with Scratch Jr

Develop Programming

Ebook Creation

Develop Programming

Programming with Scratch Jr



Bright Lights, Big City



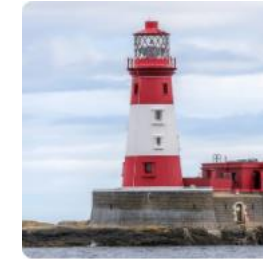
Muck, Mess and Mixtures



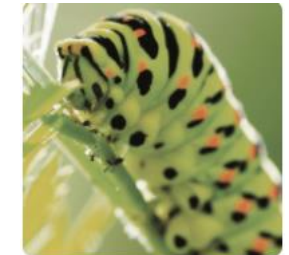
Towers, Tunnels and Turrets/Magnificent Monarchs



The Enchanted Woodland



Coastline



Wriggle and Crawl

RE	Christianity - Is it possible to be kind to everyone all the time?	Christianity - Why do Christians believe God gave Jesus to the world?	Judaism - How important is it for Jewish people to do what God asks them to do?	Christianity - How important is it to Christians that Jesus came back to life after His crucifixion?	Islam - Does going to a Mosque give Muslims a sense of belonging?	Judaism - What is the best way for a Jew to show commitment to God?
----	--	---	---	--	---	---

Music	Wider Opportunities 2 terms per class					
	Nativity Land of hope and glory - Edward Elgar	Mr Blue Sky - Jeff Lynne	Greensleeves - Henry VIII	Mr Smith (2 terms per class) Aniron (I desire) - Enya	Shanties - The Fisherman's Friends	Flight of the Bumble Bee - Rachmaninoff

PSED	Relationships - What is the same and different about us?	Relationships - Who is special to us?	Health and Wellbeing - What helps us to stay safe?	Health and Wellbeing - Who helps to keep us safe?	Health and Wellbeing - What helps us to stay healthy?	Living in the Wider World - How can we look after each other and the world?
------	--	---------------------------------------	--	---	---	---

PE	Games- Piggy in the Middle FMSs end of KS1 assessment					
----	--	--	--	--	--	--